



MOBOTIX

CASE STUDY

New Zealand's Interislander Ferry

Interislander travels the Cook Strait between the North and South Islands of New Zealand and is one of the most spectacular cruises in the world. The 92 km journey between Wellington and Picton is one of New Zealand's most iconic tourist experiences.

The service operates three ships, carrying passengers, their vehicles, rail and commercial freight: Arahura, Aratere, and Kaitaki.



All offer the freedom and ease of exploring New Zealand by road. Taking a vehicle on an Interislander ferry is as simple as parking - just drive

on and drive off. Nor do passengers with vehicles have any luggage restrictions. Offering up to 11 sailings a day, Interislander passengers also have the convenience of a wide choice of travel times.

During the Interislander journey, passengers take a stroll on the decks, enjoy a meal, a drink, or even catch the latest movie release. Or, of course, simply enjoy the breathtaking views.

The safety and security of passengers, luggage and staff at the two Ferry Terminals at Wellington and Picton, is of the utmost importance, meaning a sophisticated and efficient system is paramount. Interislander had an aged analogue system, which had poor image quality and was becoming slow and ineffective.

MOBOTIX Partner

Network Imaging Solutions (NIS) was chosen to lead Interislander's system overhaul. Partnering with Teltrac Communications, John Hurford from NIS designed a MOBOTIX installation that far exceeded the expectations of this important public safety system.

NIS has been a security solutions provider since 2004, and differs from the traditional distribution model. They are actively hands-on and have the IT experience to assist integrators install and set up systems to the end user level.



Safety And Security Of Passengers, Luggage And Staff Is Of The Utmost Importance.

John Hurford (NIS) said, "Upgrading to a new MOBOTIX IP system gave Interislander far more control over their security requirements and increased flexibility, while remaining cost-effective."

He outlined some harsh environmental conditions that created challenges for any security system at the site, "We had to deal with below freezing temperatures, with Picton and Wellington Ferry Terminals situated at sea level and subject to harsh gales, rain, hail and temperature variations. A very corrosive salt laden atmosphere also makes things difficult."

Solution

NIS designed and implemented a surveillance system comprising MOBOTIX Q24M, D12D, M24M, D24M and M12D cameras. In total over 30 cameras have been installed to date.

Ian Gilbert, Security Manager at Interislander, praised the durability of the MOBOTIX cameras and their ability to overcome the harsh environmental conditions.

"The production of custom stainless steel brackets as mounts meant we were able to protect cameras where appropriate from the difficult conditions at the site. Using these brackets, combined with the MOBOTIX camera's built-in protective housing, the system is secure from the elements."

"The salt in the atmosphere where Interislander operates was also a big issue we had heading into this project, but the self-cleaning coating on the MOBOTIX cameras made short work of this."





MxControlCenter (MxCC) software is also being used at Interislander in conjunction with the MOBOTIX hardware. MxCC is monitored live in both the manager's office and operations who have a dedicated PC to view the

cameras. This powerful software package bundled with the MOBOTIX hardware allows for both live feeds and for archiving.

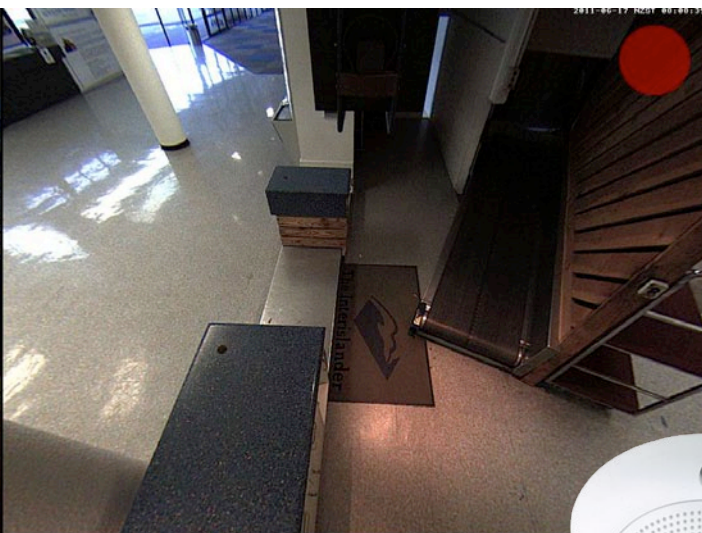
"The ongoing updates to the software license without additional payments made MxControlCenter a logical choice for our security software. Additionally, the software is extremely easy to use and powerful, fulfilling all our needs."

Outcome

Ian Gilbert, Maritime Security Manager, Interislander Line says the MOBOTIX installation had been a tremendous success.

"The MOBOTIX system has provided a durable, efficient and powerful surveillance system for Interislander. We've been able to reduce the number of lost item claims while ensuring our passengers, luggage, equipment and staff are safer than ever before."

It has replaced an ageing Panasonic analogue system, providing increased efficiency, higher resolution video footage, and increased level of security for all local and international travellers on the Interislander service. The ferry system transports 1 million passengers and 230,000 vehicles per year, making it a vital piece of New Zealand infrastructure with safety and security of the utmost importance.





MOBOTIX – Made in Germany: Innovative Technology, Reduced Total Costs

The German company MOBOTIX AG is known as the leading pioneer in network camera technology since its founding in 1999, and its decentralized concept has made high-resolution video systems cost-efficient.

Increased Resolution Reduces Amount Of Cameras Needed

1536-line, high-resolution sensors give a better overview and allow users to monitor an entire room with just one camera.

Reduced Installation Costs At Any Distance

Standard Ethernet connection enables the use of common network components such as fiber, copper and wireless (wi-fi).

Intelligent Cameras Reduce The Number Of Recording Devices

The decentralized MOBOTIX concept makes it possible to store data from approximately ten times more cameras to a single storage device than is normally possible.

Event-Controlled Image Format Minimizes Storage Costs

Automatic image adjustment (frame rate, size) based on movement, sound or signal input reduces the bandwidth and storage requirements.

Low Power Costs, No Extra Heating

Anti-fogging without heating allows usage of standard PoE technology to power the system via Ethernet or two-wire cable, saving power cabling costs.

Backup Power Supply Costs Reduced By Over 80 Percent

Low power consumption, approximately four watts, enables year-round PoE (no heating required) with one centralized UPS from installation room using the network cabling.

Robust And Practically Maintenance-Free

Fiberglass-reinforced composite housing with built-in cable protection and no mechanical moving parts (no auto iris) guarantees longevity.

Software For Thousands Of Cameras And Storage Devices Included

The right premium user interface software for every application: MxEasy for compact video solutions, MxControlCenter for professional control centers.

Unlimited Scalability And High Return On Investment

While in use, more cameras and storage can be added at any time; image format, frame rate & recording parameters are camera specific.

Additional Functions And Other Extras Included

Audio support, lens, wall mount and weatherproof housing (-30 to +60 °C; -22°F to +140°F) are included; microphone & speaker available in almost all models.

MOBOTIX AG
Security-Vision-Systems
Kaiserstrasse
D-67722 Langmeil, Germany
Tel.: +49 6302 9816-103
Fax: +49 6302 9816-190
E-Mail: sales@mobotix.com
www.mobotix.com

